



Sheriff's Office 2014/2015

Thomas M. Turner, Sheriff



Lane County Sheriff's Office

Corrections Division
Administrative Division
Police Services Division

Lane County Sheriff's Office



Corrections Division

Budget Committee Presentation

May 06, 2014

Lieutenant Dan Buckwald

Lieutenant Steve French

Corrections Division Programs



- **Main Jail**
- **Community Corrections Center (CCC)**
- **Electronic Surveillance Program (ESP)**
- **Defendant Offender Management Center (DOMC)**
 - **Education Program**
 - **Sheriff's Work Crew (SWC)**
 - **Community Service (CS)**

Adult Corrections Division

FY 14-15 Budget Information



- **147.5 F.T.E.**
- **Utilizes 44.25% of Sheriff's Office Budget**
- **Rents up to 70 Jail beds to other agencies**
 - **55 United States Marshals (USM)**
 - **15 Eugene Municipal Court (EGM)**
- **Receives program funding at CCC from Bureau of Prisons**
- **Collects fees from CCC, ESP and CS participants**
- **Receives revenue for SWC from federal, state and local non-profit agencies**
- **Receives additional revenue from grants, CCA dollars and contracts**

Community Corrections Center (CCC)



- Opened in 1986 with 32 beds. Expanded to 122 beds in 2007.
- Reduce recidivism by supervising reintegration of offenders releasing from jail and prison.
- Offenders in the program learn skills to help secure employment or further education options.
- Participants are required to obtain reasonable employment after placement.
- Offenders attend treatment based programming aimed at correcting behavior and reducing recidivism.
- Inmate fees collected for participation reduce costs to the County.
- Self-funded program that does not receive County General Funds.

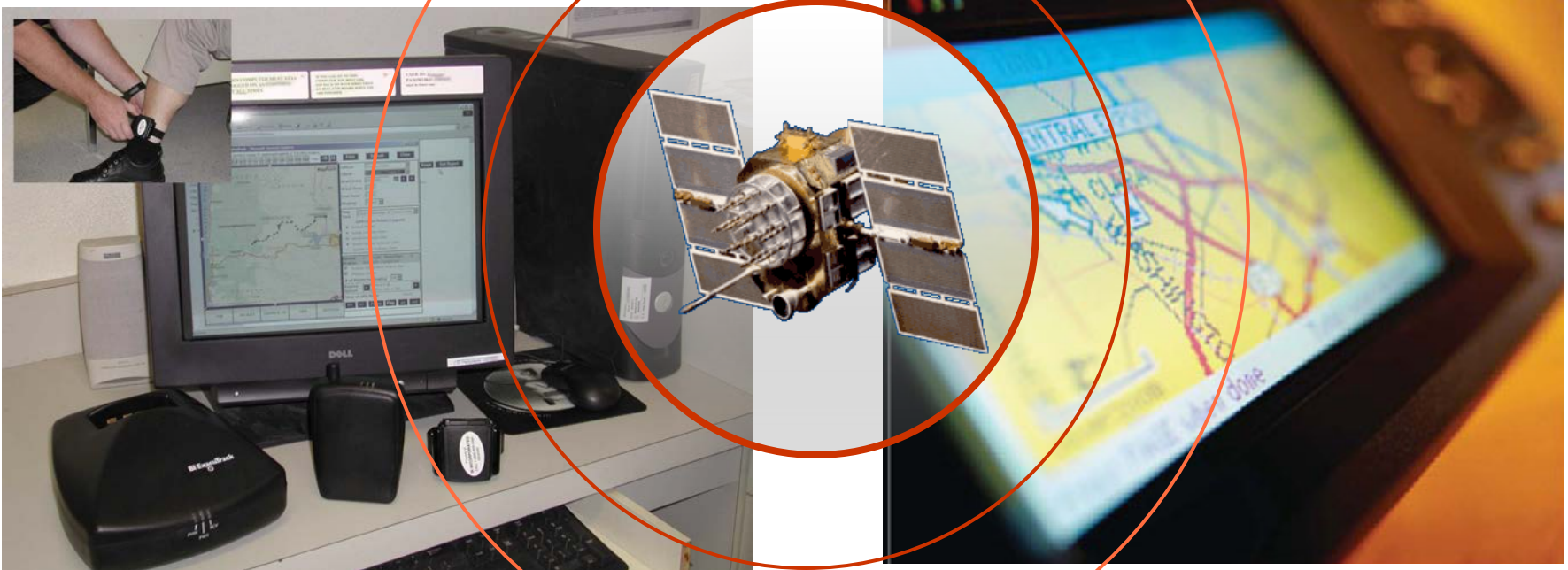
Available Beds	
Design Capacity	122
Current Capacity	36



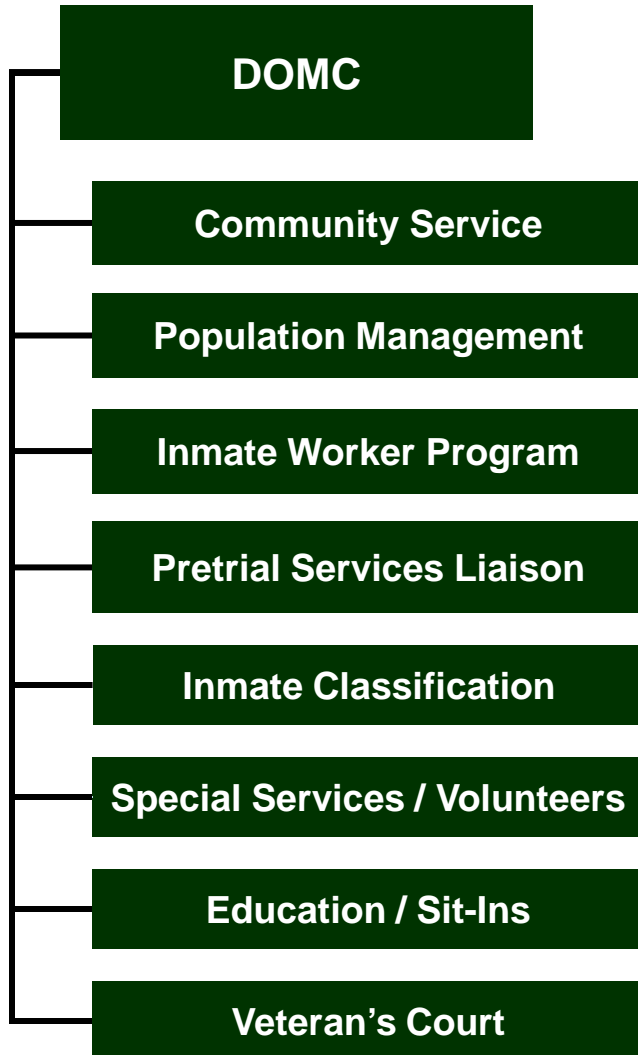
Electronic Surveillance Program (ESP)



Capable of supervising up to 70 offenders using GPS technology.



DOMC



The purpose of the Defendant & Offender Management Center (DOMC) is to assess, place and manage defendants and offenders for the protection of the community and the integrity of the criminal justice system in order to:

- Reduce the risk of community harm, and recidivism, whether a defendant is released pretrial or a sentenced offender is placed in a less restrictive or community-based program.
- More efficiently and effectively utilize Lane County criminal justice system resources.
- Increase the rate at which defendants and offenders appear for scheduled court proceedings.



Education Program

After being closed for nearly two years due to lack of funding, the Education Program was re-opened April 07, 2014, with HB 3194 funding and currently has 14 offenders enrolled.

- **During FY 11/12:**
 - **1200 hours of instruction were provided to 256 inmates**
 - **209 General Equivalency Diploma (GED) subtests were successfully passed**
 - **19 inmates earned their GEDs**
 - **104 inmates achieved an academic level gain in reading, writing, or math**



Sheriff's Work Crew



- 5 Full Time Deputy Sheriffs assigned.
- Self-funded program uses no County General Funds.
- Crews operate seven days a week.
- Work with BLM, USFS, Lane County Solid Waste, Forest Service, City of Eugene, many other non-profits, as well as other County departments.
- State CCA funding provides crews to be utilized on County projects.



Community Corrections Act Lane County Projects



Before



During



After

Community Service



Over 1200 offenders were assigned to Community Service. The successful completion rate is approximately 66%.

We are currently working with several businesses and non-profit organizations to place program participants.



SENIOR MEALS PROGRAM
Good Food.....Good Friends.....Good Times





LANE COUNTY
ADULT CORRECTIONS
RICHARD K. SHERMAN
DEFENDANT & OFFENDER
MANAGEMENT CENTER
101 W. 5TH

PLEASE DO NOT
ENTER THIS AREA
UNLESS YOU ARE
A MEMBER OF THE
STAFF OR HAVE
A VISITOR'S
PASS

PLEASE DO NOT
ENTER THIS AREA
UNLESS YOU ARE
A MEMBER OF THE
STAFF OR HAVE
A VISITOR'S
PASS

PLEASE DO NOT
ENTER THIS AREA
UNLESS YOU ARE
A MEMBER OF THE
STAFF OR HAVE
A VISITOR'S
PASS

PLEASE DO NOT
ENTER THIS AREA
UNLESS YOU ARE
A MEMBER OF THE
STAFF OR HAVE
A VISITOR'S
PASS

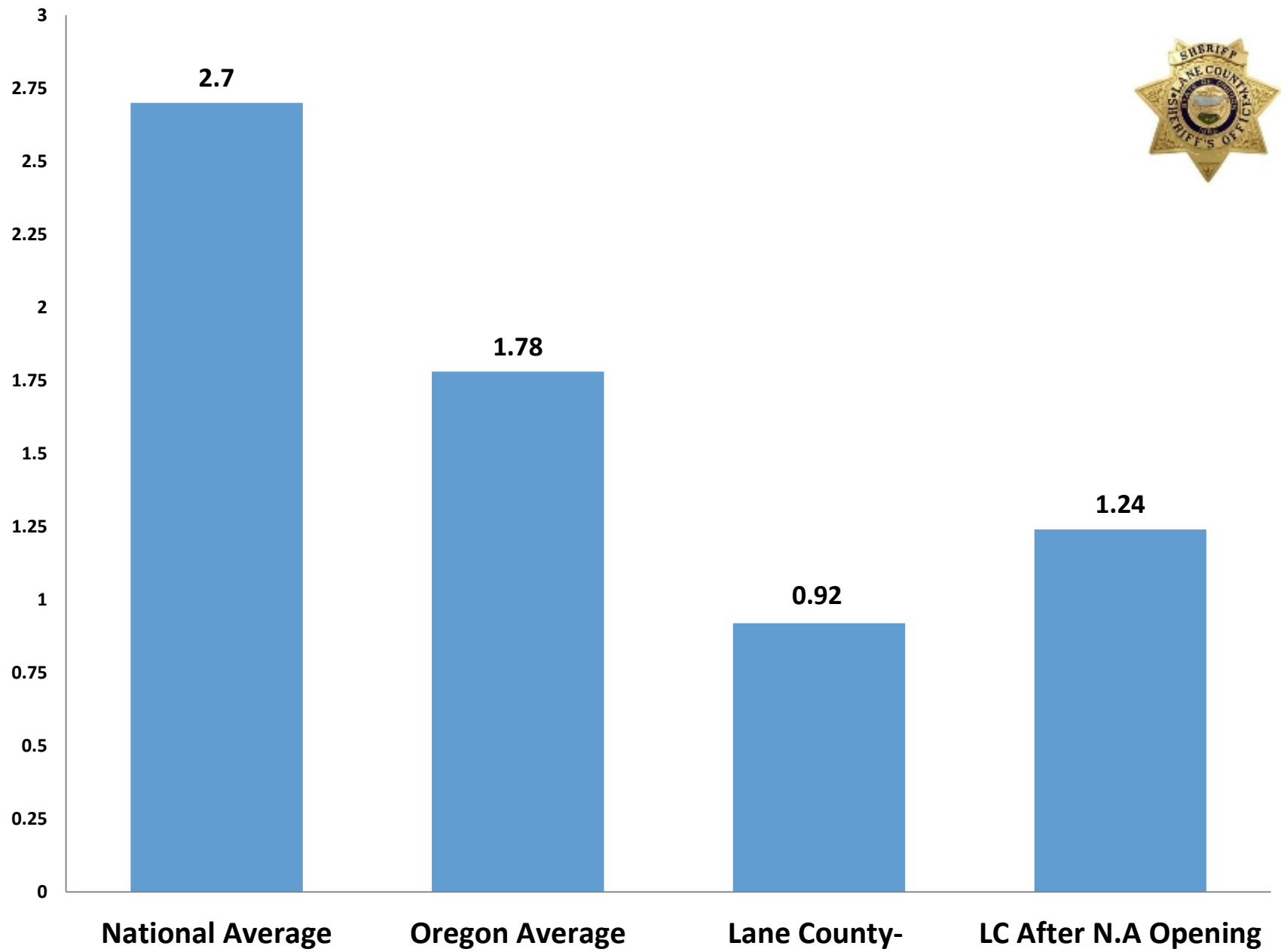


Capacity Based Release (CBR)-
Un-adjudicated or sentenced criminal offenders released from jail custody to prevent exceeding the maximum capacity allowed by federal mandate.

In July of 2013, the Lane County Voter Approved Public Safety Levy Supported the Reopening of 131 Jail Beds for local Offenders in the Lane County Jail. These additional beds have had a significant impact in reducing both the number of offenders CBR'd and reducing the dangerousness of the offenders that we are required to release.



As soon as adequate staff are hired, certified and trained, the Corrections Division will reopen the North Annex housing area. This will provide an additional 84 beds for local offenders.

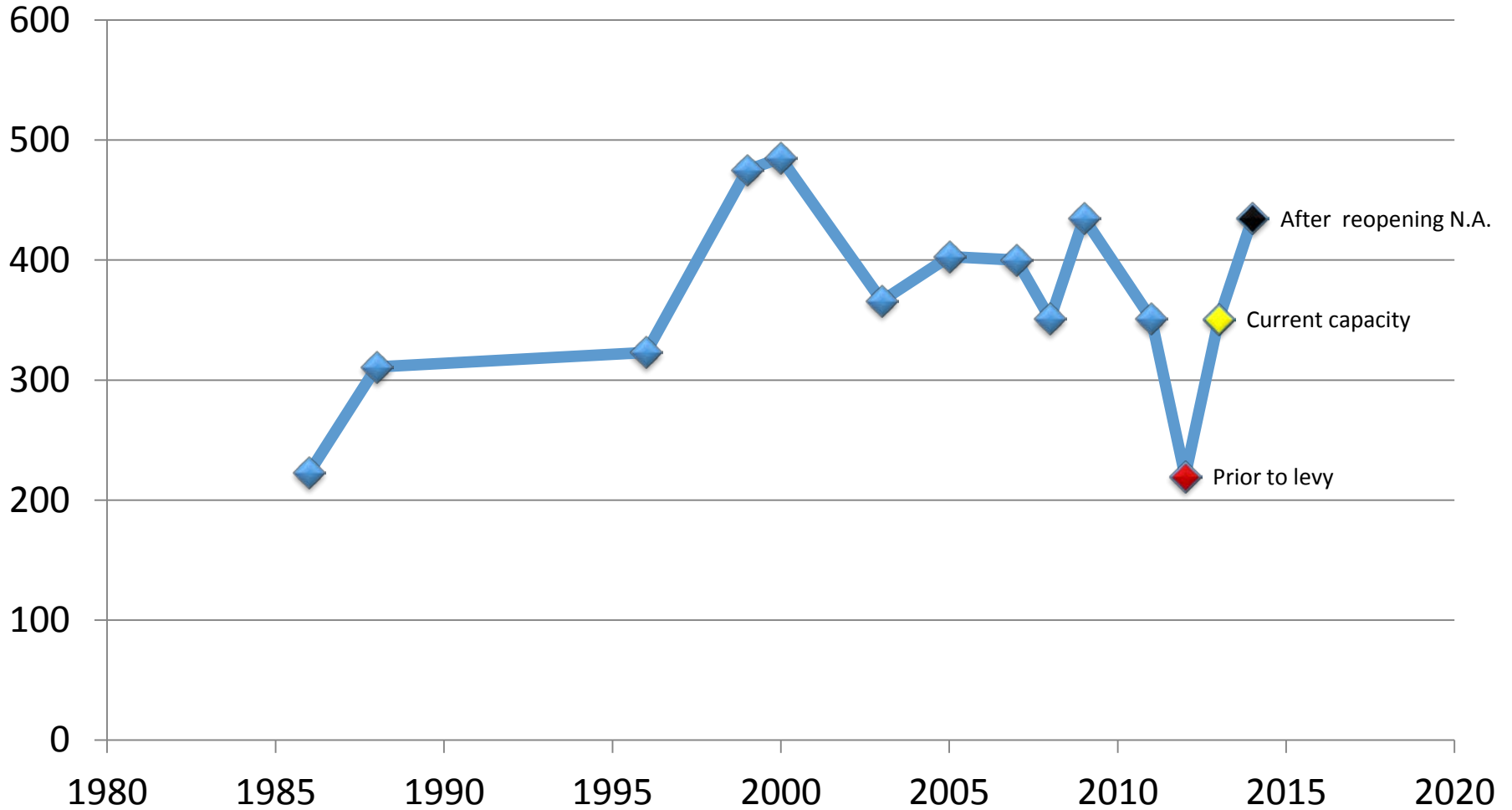


■ Beds per 1000 Population

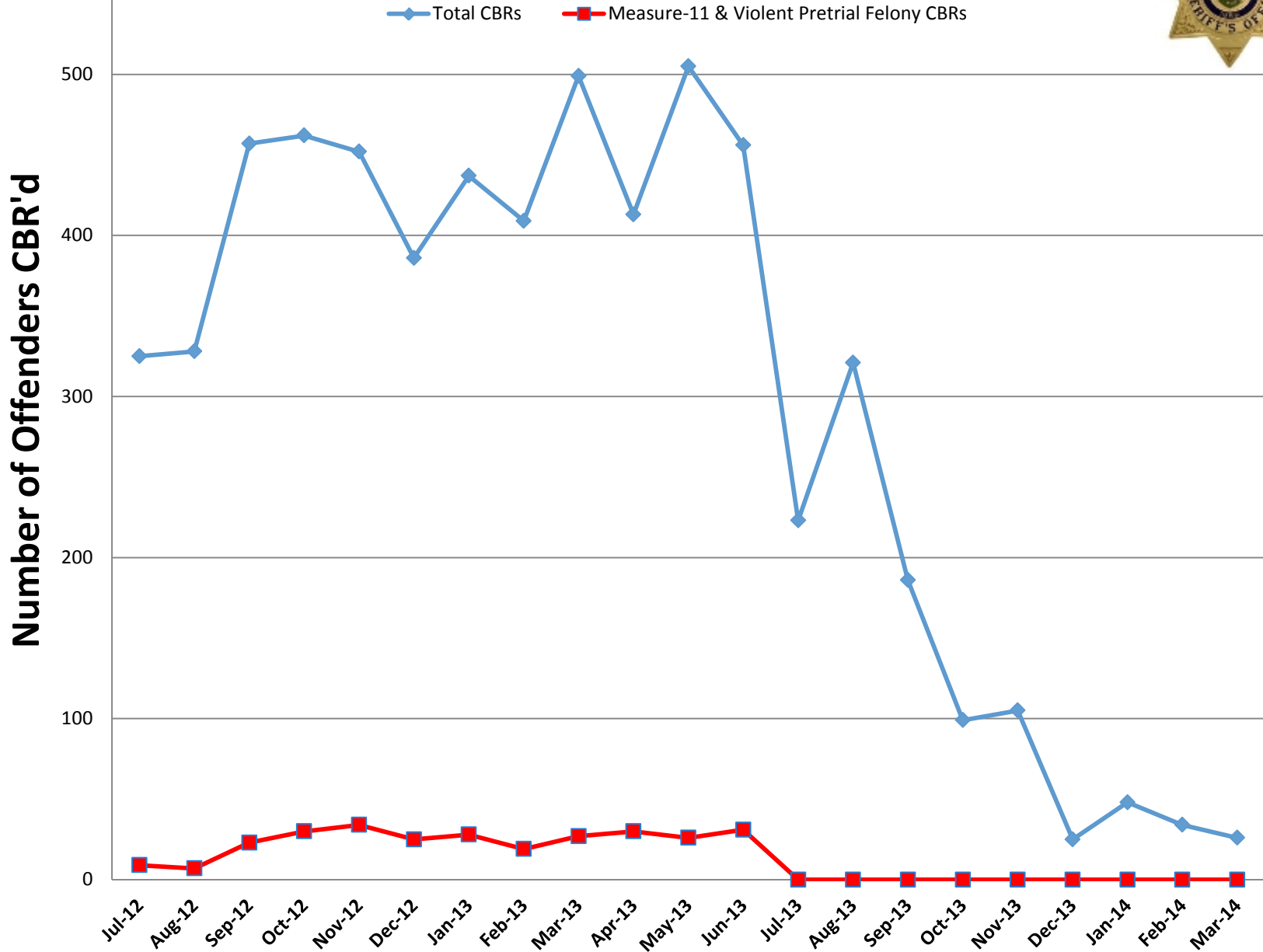
Lane County Jail Capacity



Capacity



FY 12/13 and 13/14 Capacity Based Releases





Corrections Division

Collaboration and Partnerships

- **DOMC, CCC and ESP are working with:**
 - **P&P**
 - **Sponsors**
 - **Emergence**
 - **Other non-profits**
 - **Reinforce EBP**
 - **Education Program**
 - **Day Reporting Center**
 - **Many other public and non-profits agencies**



Corrections Contracting

- **Contracting goals:**
 - Reduce costs to County
 - Improve services
 - Compliance with state and federal laws
- **Recent RFP processes include:**
 - Inmate telephone/video visitation
 - Commissary
- **Currently contracting inmate services for:**
 - Medical
 - Food
 - Commissary
 - Telephone
 - ESP equipment



SHERIFF

SHERIFF'S OFFICE
LANE COUNTY

STATE OF OREGON

1859

Administrative Division



PURPOSE: To support all divisions and programs within the Sheriff's Office by:

- **Providing training,**
- **Fiscal management,**
- **Human resource services,**
- **Resource development,**
- **Professional standards,**
- **Labor relations,**
- **Planning,**
- **Emergency management coordination.**

Administrative Division

Division Commander: Chief Deputy Byron Trapp



Services:

- **Support Services: Records, Dispatch, Property & Evidence**
- **Emergency Management**
- **Search and Rescue (SAR)**
- **Fiscal & Grant Administration**
- **Training**
- **Office of Professional Standards**
- **Human Resources**
- **Public Information/Volunteers**

Administrative Division



FY 14/15 Budget: \$23,413,584

- **\$8,885,940 tied directly to the Administrative Programs**
- **\$8,398,733 goes to Corrections support (Levy + Training)**
- **\$3,270,360 covers support functions (Fleet, Aviation, etc.)**
- **\$1,520,050 provides additional functions (SW7 Radio and Communications Consortium, Internet Task Force, etc.)**
- **\$764,877 pays for employee services (Training, CIRT, etc.)**
- **\$486,520 is for facility operations (Short Mountain, Communication Network, copiers, etc.)**
- **\$87,104 is grants (JAG)**



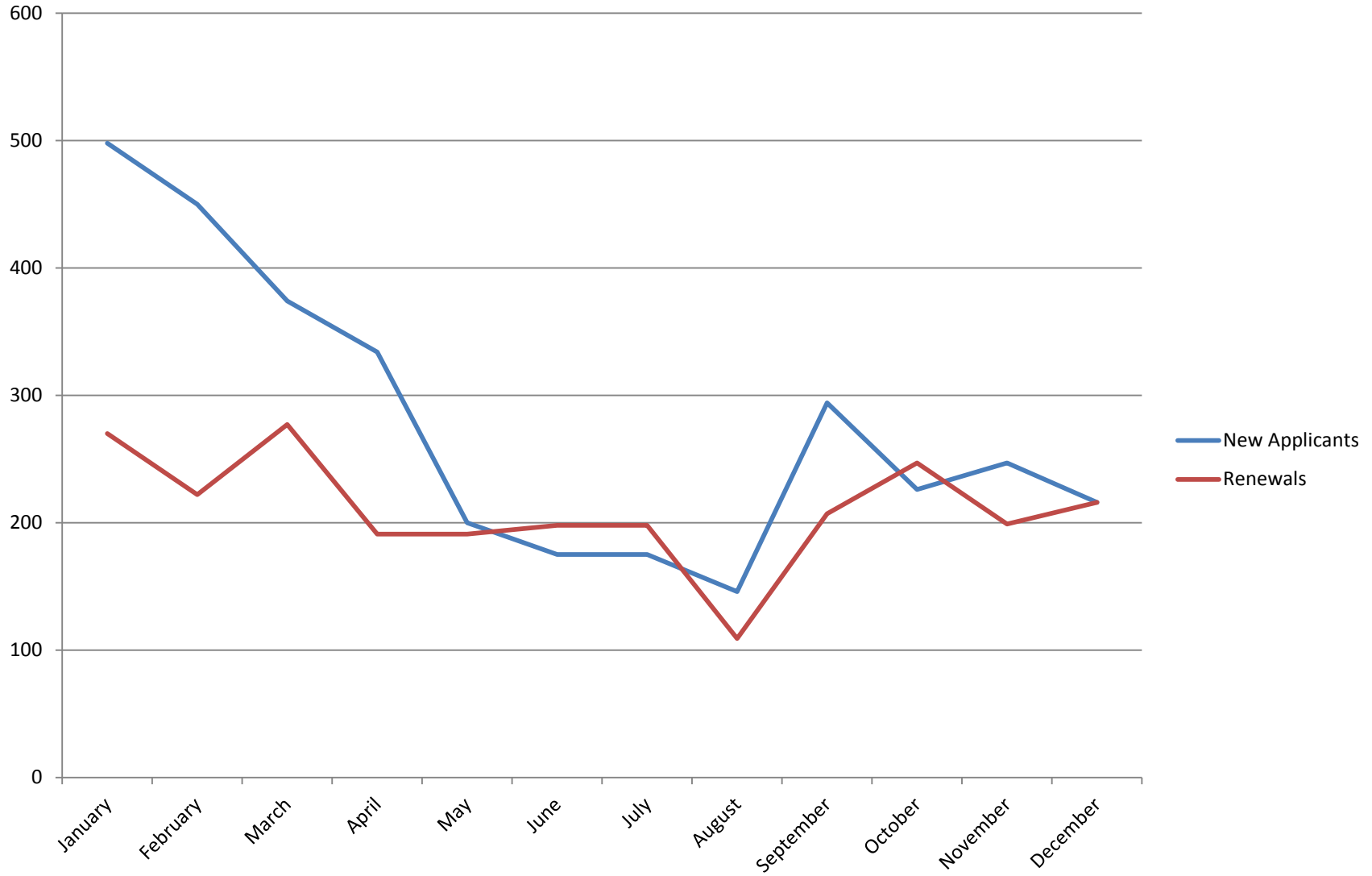
LCSO Support Services

- **Communications- Police Dispatch**
 - **2013: Calls - 82,110 (7,486 were 9-1-1)**
 - **Average ring time – 5 seconds**
 - **66,358 records entered into Computer-Aided-Dispatch system**
- **Police Records and Central Reception**
 - **Performed data entry for 7,119 cases and 2,468 citations**
 - **Entered 967 Restraining Orders / 242 Stalking Orders**
 - **Entered 2,030 Warrants**
 - **Registered 339 Sex Offenders**
 - **Processed 3,335 new CHL applications & 2,525 CHL renewals**



2013 Calendar Concealed Handgun Licensing Activity

(Nationally – approximately 3.7 million weapons were licensed)



LCSO Support Services



- **Jail Records**

- **2013: Processed 14,113 Bookings**
- **Entered 850 No-Contact Orders and removed 780.**
- **Processed 220 Public Records and Media requests**
- **Implemented new JMS System**



- **Property and Evidence**

- **2013: 4,870 new property/evidence items were submitted to the unit.**
- **Returned 483 items to citizens.**

LCSO Support Services



Civil Intake Area



CHL / Reception Area



2013: Our Central Reception area received a much needed remodel funded by County Capital Improvement Funds. The remodel expanded the public areas of both the CHL/Reception and Civil Intake Units, providing greatly enhanced safety for our staff, while gaining greater efficiencies in serving the public. The new Civil Intake area allows better privacy for citizens coming down from Court with restraining/stalking orders for service during what can be an emotional time for them.

Emergency Management



- Only 1 FTE
- ORS 401 Mandate
- Disaster Declaration Process
- Federal Grant Programs
- Partner Agencies
 - 10 Cities
 - 10 Police Departments
 - 25 Fire / EMS agencies
 - 4 Public Works agencies
 - 6 Utilities
 - 4 Hospitals
 - ODOT
 - US Army Corps of Engineers (9 dams)
 - National Guard



**February 6-10, 2014
Severe Winter Storm**

**President Obama proclaimed
Disaster Declaration for Lane
County on April 4, 2014**

Emergency Management



- **Planning**
 - Emergency Operations Plan
 - Hazards Mitigation Plan
 - Continuity of Operations Plan
- **Training**
 - Public Education & Outreach
 - Required to have 20 hours of training each year
- **Exercises**
 - Participates in at least four exercises per year, one at least full scale – **Last one was April 2014 (hazardous/fuel spill: LTD – many agencies involved).**



Volunteer Ham Radio Operators participate in Statewide Communications Exercise using Sheriff's Mobile Command Trailer
November 2013

Search and Rescue



- **2013: Lane County was the most active SAR program in the state**
- 200+ volunteers donate time, energy, property, skills and training to save lives in Lane County. Current FTE staff: 2.0
- 2013: LC SAR volunteers donated 21,671 hours of their time.
 - Using the National Value for Volunteer Time of \$22.14/hour, this equates to about a \$500,000.00 force multiplier.
- 2013: SAR conducted an all-time record of 114 missions and assisted 148 citizens.
- Nationally recognized program – has earned multiple state awards!



Public Education
Volunteer during 2013 LCSO SAR
Life Jacket exchange at Cabela's

Search and Rescue

Success through Teamwork



SAR is comprised of 8 individual groups:

- Eugene Mountain Rescue
- Water Search and Recovery
- Ham Radio Team
- Special Vehicles Group
- Sheriff's Mounted Posse
- Search Dogs
- Ground Search and Rescue
- Explorer Post 178

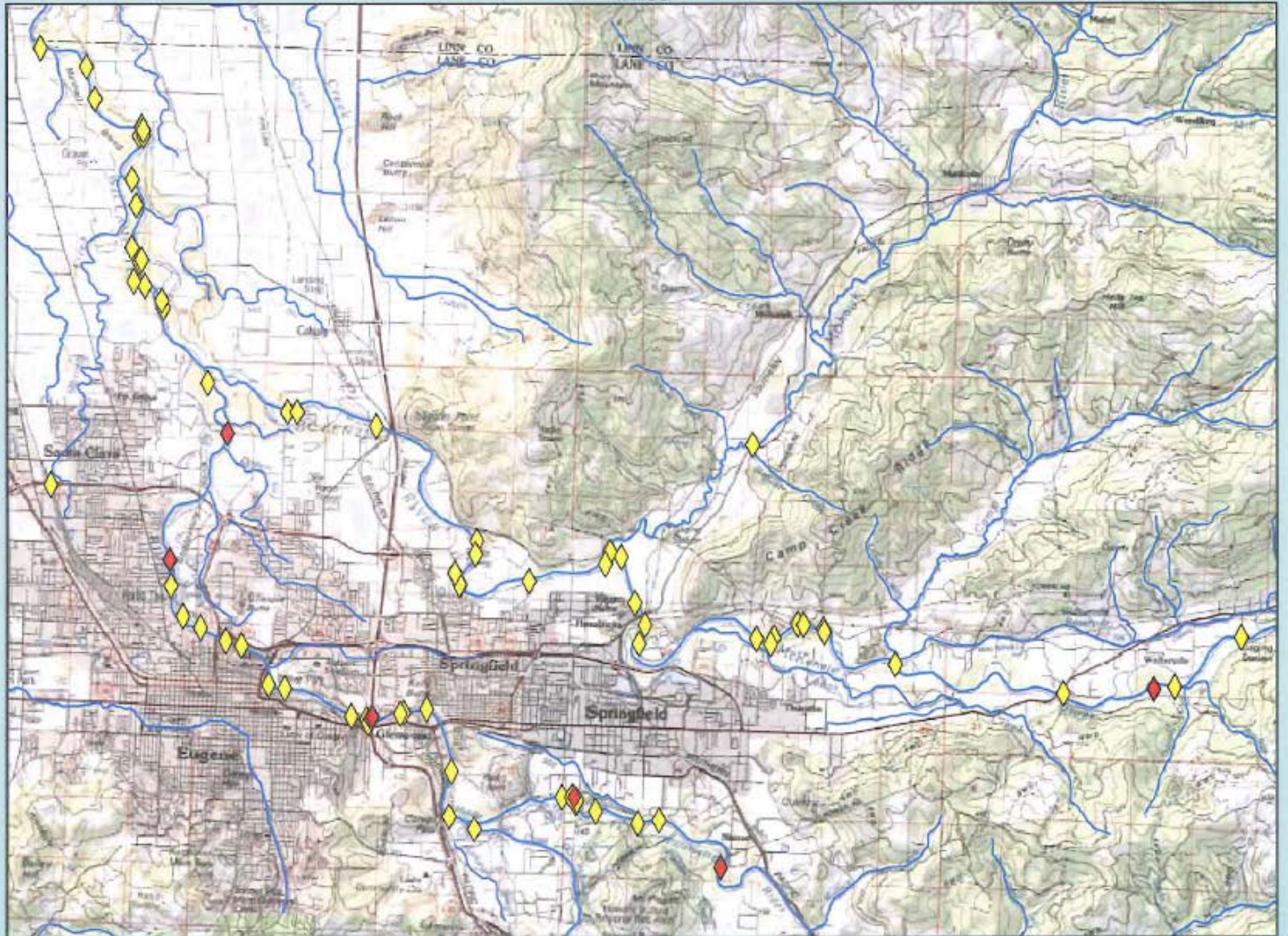
Volunteer divers during a complex drowning recovery.



0 1 2 3 4 5 6 7 8 9 10 11 12 13 14 15



Miles



Recovered

◆ Deceased

◆ Alive

Water Missions

Eugene - Springfield

2010-2013

Date: 3/5/2014

Created by georges kleinbaum



Fiscal

- **Budget, manage and monitor over \$63.9 million annually in LCSO financial transactions.**
- **Apply for and administer federal, state and local grants.**
- **Administer contracts, prepare Board Orders, ordinances and changes to Lane Manual for LCSO.**
- **Account for all inmate funds, forfeitures funds and other funds held in trust.**
- **Process, review and approve LCSO employee timecards.**
- **Issue and inventory all LCSO equipment and uniforms.**
- **Request, bill and collect \$35 million annually in revenue from grants, contracts and fees.**

Grants Administration



The Sheriff's Office continues to aggressively apply for and administer grants, including grants that:

- Fund transitional housing, substance abuse treatment services, and mental health services.
- Support the Lane County Adult Drug Court and the Veterans' Court.
- Provide enhanced protection for victims of domestic violence.
- Conduct Request for Proposal and Request for Quote processes for the Sheriff's Office
- The grant for the Resident Deputy Program will be met in May 2014.
- These grants, totaling more than \$4 million over the past years, have provided treatment, housing, and other services to those involved in the criminal justice system or those that are returning to our community from periods of incarceration.

Training



- One FTE
- Ensure that staff receive trainings mandated by law, required to maintain certifications, and necessary for assignment.
- Reduce training costs by:
 - providing many courses on-line
 - coordinating with other agencies and participating in joint training opportunities





Office of Professional Standards

- **Ensure that employees and volunteers maintain credibility both externally and internally, and are trusted with LCSO, Lane County, and the community.**
- **Require that employees and volunteers meet the highest performance standards of integrity and ethical performance, and with policies/procedures.**
- **Investigate allegations of employee misconduct.**
- **Administer process for implementing and revising LCSO policies and procedures.**

Human Resources (HR)



- Support the strategic direction of the Sheriff's Office in application of human resources by providing executive level support/counsel for SO on employment laws and regulations. Administer, review, adjust and maintain classification and compensation, maintain personnel records and systems, provide human resource information to internal and external clients. Administer programs to maintain compliance with applicable Federal, State and contractual mandates and laws.
- Support the Office with classification reviews. Provide assistance and response to grievances and complaints. Participate in employee dispute resolutions.
- Processed 24 new recruitments
 - Three rounds of DS/RDS recruitments running simultaneously
 - Successfully improved recruitment pool by implementing Open House pre-posting.
- 884 Applications processed
- 45 New hires processed
- 12 Promotions processed
- 18 Terminations processed
- Support the Sheriff's Office and provide essential backup to county-wide benefits programs including medical, dental, vision, retiree medical, short and long term disability, ADA claims.
- Retiree and medical review meetings

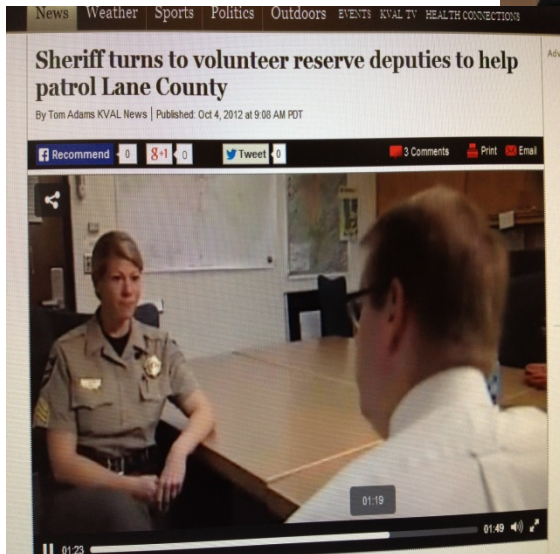


Oregon Physical Abilities Testing

Public Information/ Volunteers



- Position was created in response to:
 - The goal to better communicate with the public.
 - A growing number of volunteers.
 - Administration of contracts with tow providers.



PIO/Volunteers



The Sheriff's Office has almost 700.



Neighborhood Watch



HAM Radio Team



Mounted Posse

**Volunteers do not get paid,
but they are priceless.....**



Information Volunteer



Search and Rescue

Connecting with the Community



Annual Life Jacket Exchange

The Sheriff's Office and the Mid Valley Rotary Club partner together to provide community members an opportunity to exchange personal flotation devices (PFDs) that their children have outgrown for properly fitting ones.



Community members without a life jacket who are unable to afford a PFD are provided one free of charge.

The Rotary Club is seeking to make this a state and nation-wide program!



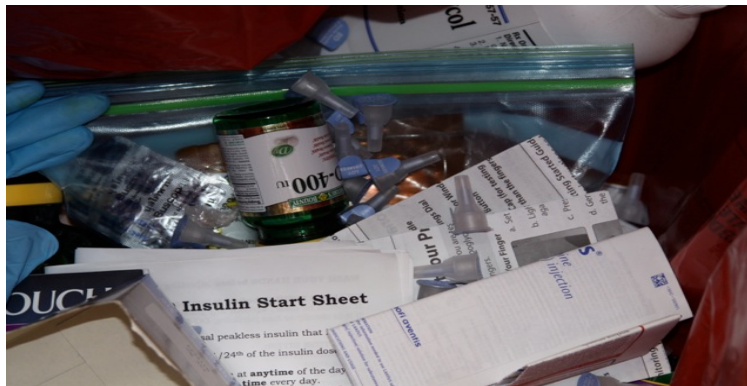
Connecting with the Community



National Drug Take Back Event

The Sheriff's Office partners with the Drug Enforcement Agency to sponsor a Drug Take Back Event, where community members can bring their unwanted or expired medication for proper disposal (helps prevent possible abuse).

- Last October, Americans turned in 324 tons (over 647,000 pounds) of prescription drugs at over 4,114 sites operated by the DEA and thousands of law enforcement partners.
- Last month, the Sheriff's Office collected over **139 pounds** of prescription and over-the-counter medications!



Connecting with the Community



The Sheriff's Office collaborates with local service providers to submit grant applications to maintain or expand vital treatment and support services in our community.

- **Over \$4 million of competitive grant funding has been awarded to the Sheriff's Office over the past several years (not including formula grants that provide funding solely to the Sheriff's Office).**
 - **Of this, \$995,000 has gone to fund substance abuse treatment.**
 - **\$850,000 has gone towards re-entry support.**



SHERIFF

SHERIFF'S OFFICE
LANE COUNTY

STATE OF OREGON

1859

Police Services Division



Mission: To Conserve The Peace

Law Enforcement Service Population – 98,751

Service area – 4,620 sq miles



Current Level of Patrol Service



- **1 Captain, 1 Lieutenant, 1 Admin Assistant**
- **6 Main Office Patrol Sergeants**
- **21 Deputy FTE (budgeted)**
- **Funding last year enabled us to return to 24/7 on-duty Patrol staffing**
 - **Resumed services:**
 - ✓ **On-duty staff available to respond to life-safety calls for service 24/7**
 - ✓ **Deputy dispatched to residential burglary calls**



Current Level of Patrol Service



- **Continued No Investigation or Deputy Response to:**
 - Most commercial burglaries
 - Motor vehicle crashes (unless serious injury or fatality)
 - Property theft or property damage
 - Citizens must submit their own CSR (Citizen Self Report form) to report crimes
- **66,358 calls for service received in dispatch in 2013**
 - 15,835 were not dispatched (24% of calls logged received not dispatched)
 - 2,181 were sent for Citizen Self Report (CSR)
 - ✓ CSRs sent for most property crimes: Theft, Criminal Mischief, Harassment, Hit & Run, Burg 2, Identity Theft, Fraud, etc.
 - ✓ Only 744 CSRs received back (34% return rate)

Resident Deputy Program



Resident Positions (3 Deputies):

- West Lane
- South Lane
- McKenzie/Mohawk
 - Responsible for enhanced deputy responses and investigations in designated areas
 - Familiarity with community and residents makes for more efficient police service
 - Involved in community meetings: Neighborhood Watch, Schools, etc.



Every 15 Minutes Program



- 10/2010 – McKenzie H.S.
- 04/2011 – Mohawk H.S.
- 10/2011 – Pleasant Hill H.S.
- 04/2012 – Creswell H.S.
- 05/2012 – Thurston H.S.
- 11/2012 – Springfield H.S.
- 04/2013 – Lowell H.S.
- 10/2013 – North Eugene H.S.
- 04/2014 – Churchill H.S.



Sheriff's Office Patrol Contracts



- **Approx. ¼ of PSD Deputies**
- **Patrol/ Investigative Services for:**
 - **City of Creswell**
 - **City of Veneta**
 - **Marine Patrol**
 - **BLM**
 - **Oregon State Parks (Dunes Patrol)**



Criminal Investigations Section (Detectives)



- 1 Detective Sergeant and 4 Detectives
- 10 Lane County homicides Investigated in 2012 that are still processing through the courts (*One homicide in 2013*)
- 172 Felony persons crimes investigated in 2013 – predominantly physical and sexual abuse against children



Civil / Transport Programs



- 1 Sergeant shared by both programs
- 2 Deputy Sheriff FTE for Civil
- Civil Deputies responsible for completing paperwork on Sheriff sales as directed by the courts
 - Increasing workload
 - ✓ One of top three counties in Oregon for volume of Sheriff sales
 - ✓ 19 sales in 2010, 15 in 2011, 98 in 2012, 209 in 2013, already well over 200 YTD 2014
- Civil Deputies Responsible for “priority paper service” in the metro area
 - Restraining Order Service
 - Stalking Order Service
 - Evictions
 - Having to be done on overtime and by Transport Deputies during court breaks due to Sheriff sales workload



Civil / Transport Programs



- **6 Deputy Sheriff FTE for Transport**
- **Transport in-custody defendants from Lane County Jail to Courthouse for court appearances**
- **Escort in-custody defendants to courtroom, provide securing during court process**
- **Transport inmates from LCAC to state "Hub" in Marion county twice a week**
- **Medical transports**
- **Helping Civil Deputies by serving priority papers during court recess**





SHERIFF

SHERIFF'S OFFICE
LANE COUNTY
STATE OF OREGON
1859